



# **EIZO MIS File JAMP AIS File Entry Manual**

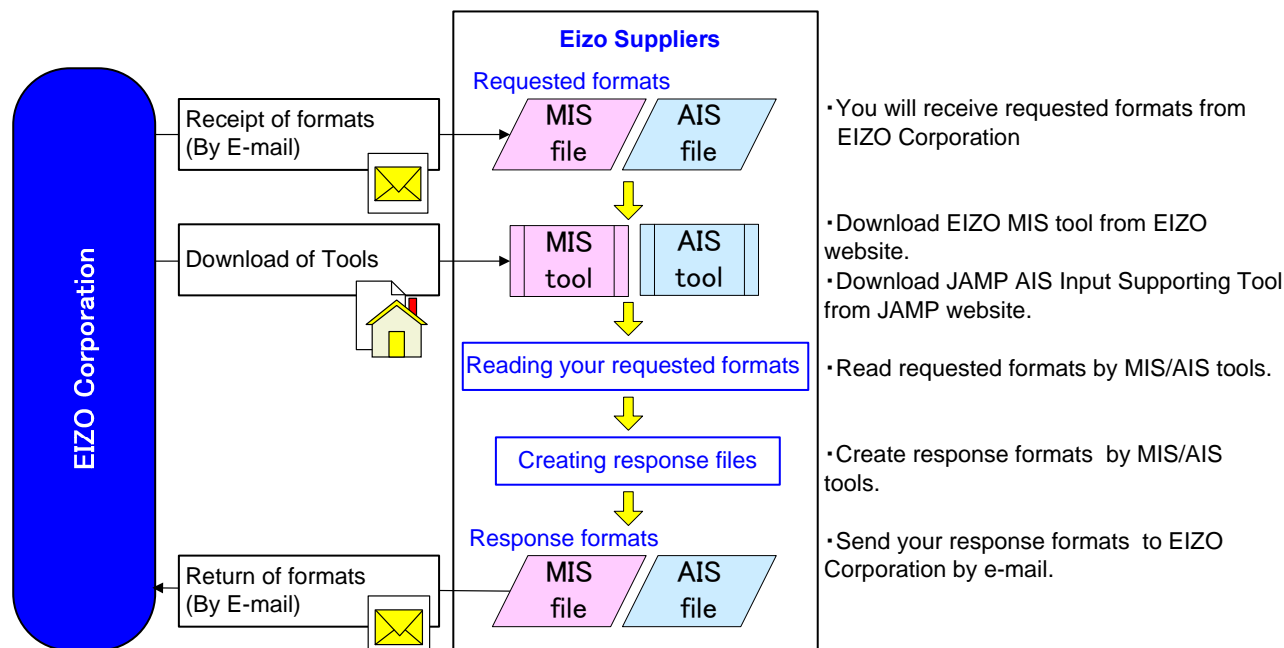
**July 2016**  
**EIZO Corporation**

## Contents

[1]	Introduction	3
[2]	Versions and types of survey Files	3
[3]	Flow of creating MIS File	4
[4]	Activation of MIS tool	4
[5]	MIS File: Reading	5
[6]	MIS File: Confirmation of the required items «sheet:"input_1"»	7
[7]	MIS File: Data input «sheet:"input_1"»	7
[8]	MIS File: Data input «sheet:"input_2"»	8
[9]	MIS File : Verification of your input data «sheet:"input_1"»	12
[10]	Creates MIS File	13
[11]	Finishes MIS tool	13
[12]	Flows of creating AIS File	14
[13]	Activation of AIS tool	14
[14]	Confirmation of External List	15
[15]	Reading the AIS File	15
[16]	AIS File : Confirmation of requested item «Requester Information sheet»	18
[17]	AIS file: Input of the required items «General Information»	19
[18]	AIS file: Data input «Composition Information»	20
[19]	AIS file: Verification of data input, Creating file «Calculation»	21
[20]	Finishes AIS tool	22
[21]	Submission of File	22

## [1] Introduction

This entry manual have been created and established based on the present EIZO Procurement Standards (RC02-053 Ver.Q) and describes how to complete the Chemical Substances Survey File for each products (including subassembly parts), materials, and parts purchased by EIZO Corporation.



## [2] Versions and types of survey Files

Reply Files consist of two different files, and this manual contains instructions on the following files.

- (1) EIZO MIS File Ver.1.3
- (2) JAMP AIS File Ver.4.1c (Substance List: 4.060 or after, Material List: 2.01 or after)

### (1) EIZO MIS File (Abbrev: MIS File)

- EIZO MIS File was independently created by EIZO Corporation.
- To create MIS File, please download EIZO MIS tool (Abbrev: MIS tool) from EIZO's website.  
URL: [http://www.eizo.co.jp/company/csr\\_environment/product/green/index.html](http://www.eizo.co.jp/company/csr_environment/product/green/index.html)  
(For Survey outline and questionnaire )  
(Please download the latest version of MIS File from EIZO's website.)
- The File extension is ".mis".
- Please save the File as "EIZO Part Number (10-digit)\_MIS1.3\_date.mis" (Automatically-generated)  
Example) "0123456789\_MIS1.3\_20160701.mis"  
(EIZO Part Number)(MIS Version)(Date)

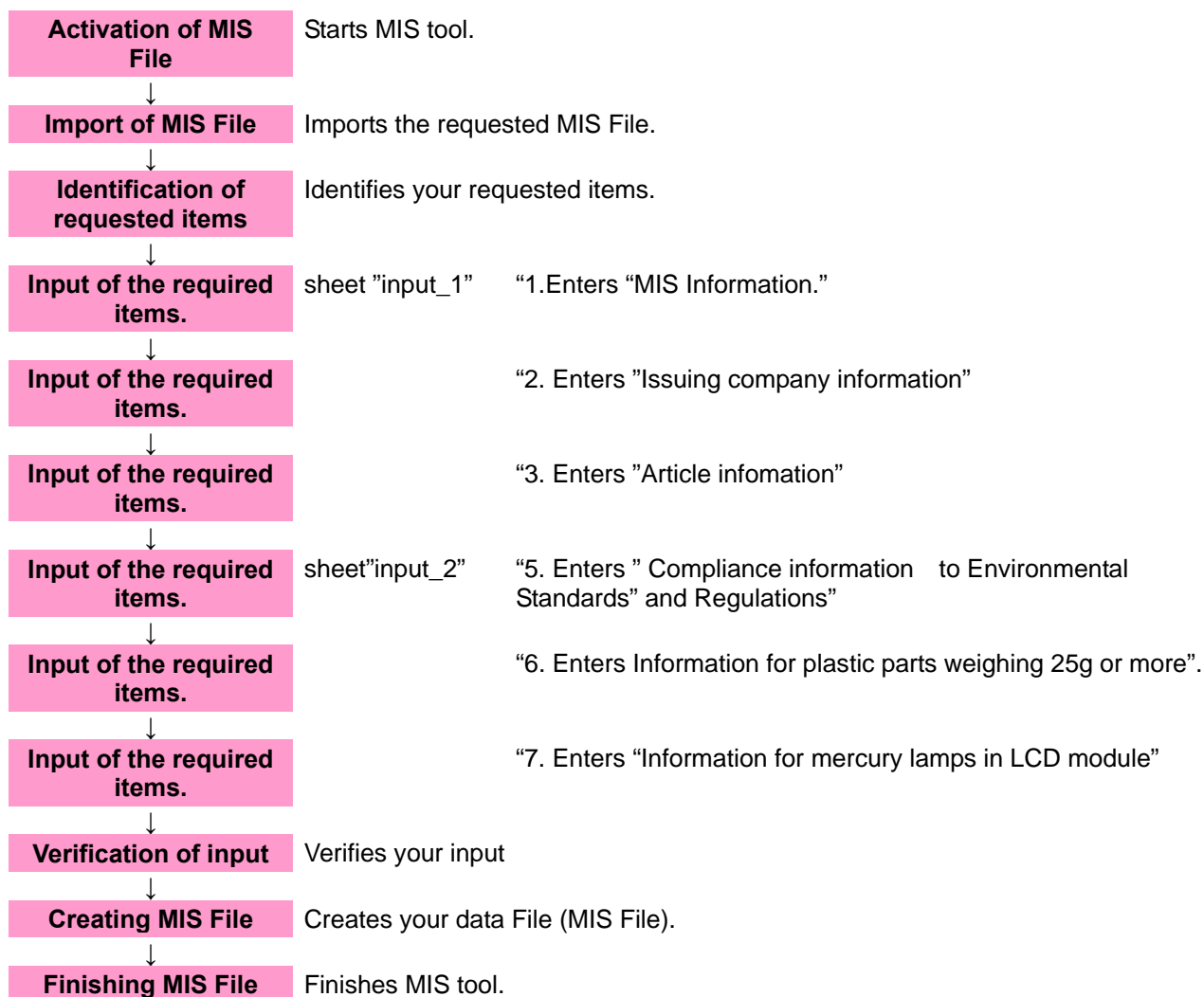
Please refer to Section 3 – 11 to create the File in this entry manual.

### (2) JAMP AIS File (Abbrev.:AIS File)

- AIS File is a JAMP standard survey File.
- To create AIS File, please download JAMP original AIS tool (Abbrev.: AIS tool) from the official website of JAMP.  
URL: <http://www.jamp-info.com/ais>
- The File extension is ".xml".
- Please save the File as "EIZO Part Number (10-digit)\_AIS standard file name.xml"  
AIS standard file name: "{AISA4(Original part) or AISB4(Complex article)}\_{Date}\_{Requesting's Item No.}"  
Example) "0123456789\_AISA4\_20160701\_ABC.xml"  
(EIZO Part Number) (AIS Version) (Date) (Requesting's Item No.)

Please refer to JAMP article information sheet preparation manual and AIS input support tool from the official website of JAMP or this entry manual Section 12-19 to create the File

### [3] Flow of creating MIS File



### [4] Activation of MIS tool

4-1 After downloading MIS tool, Please save the tool in any folder such as desktop.

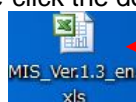
For Survey outline and questionnaire ;URL: [http://www.eizo.co.jp/company/csr\\_environment/product/green/](http://www.eizo.co.jp/company/csr_environment/product/green/)  
(Please download the latest version of the Files from EIZO's website.)

#### Caution

MIS tool is a rewritable tool. Downloading the file is not necessary for every time. However, please create data with the latest version.

4-2 Save the MIS File indicated in the request from the EIZO personnel in any folder such as desktop.

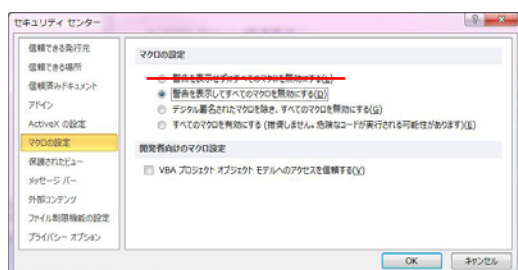
4-3 Double-click the downloaded MIS tool icon.



Double-click the icon

#### Caution

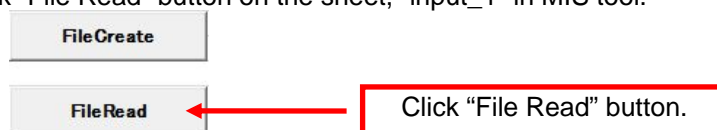
Please do not set the Excel macro security setting to "Disable all macros without notification." If security is set to "Disable all macros without notification," the macro may not function properly.



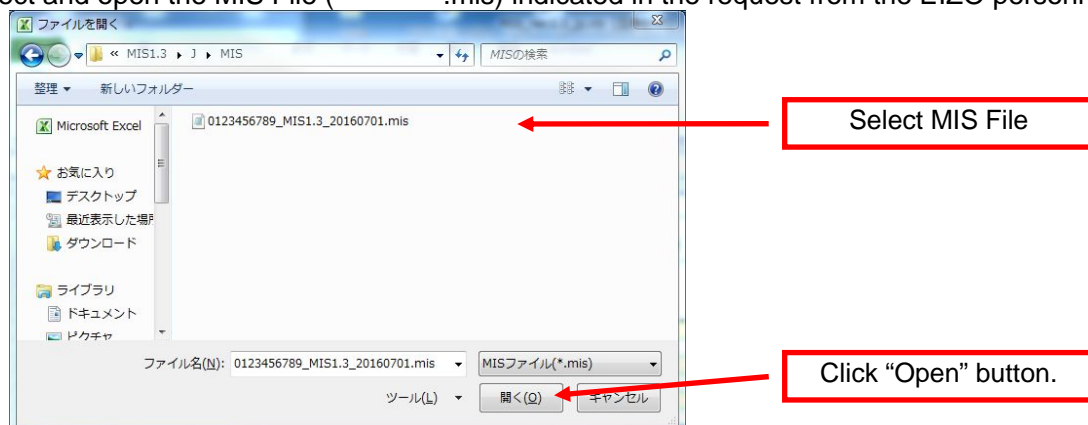
#### 4-4 Image of MIS File after started operation

#### [5] MIS File: Reading

5-1 Click “File Read” button on the sheet, “input\_1” in MIS tool.



5-2 Select and open the MIS File (\*\*\*\*\*.mis) indicated in the request from the EIZO personnel.



5-3 File Reading completes.

# 5-4 Image of MIS File after Reading

After Reading MIS File, the following image will be displayed. Please provide necessary information.

Sheet  
"input\_1"

**MIS (Material Information Sheet)**

1. MIS Information

2. Issuing company information

3. Article information

4. Requester Item Number (100 items max. If exceeding 100 items, make additional files.)

5. Requester Information

Entry of Information in yellow-high lighted cells must be required.

Data input  
Provide necessary information for "MIS Information"

Data input  
Provide necessary information for "Issuing company Information"

Data input.  
Provide necessary information for "Article information"

"Requester Item Number" and "Requester Information" will be indicated by EIZO personnel.

Sheet  
"input\_2"

**5. Compliance to Environmental Standards and Regulations**

**6. Information for plastic parts weighing 25g or more**

**7. Information for mercury lamps in LCD module**

**8. Information for LCD panel**

Data input  
Provide necessary information for "Compliance to Environmental Standards and Regulations".

Data input  
Provide necessary information for "plastic parts weighing 25g or more".

Data input  
Provide necessary information for "Compliance to Environmental Standards and Regulations".

Data input  
Provide necessary information for "Information for LCD panel".

Data input  
If your item is targeted, provide detailed information.

[6] MIS File: Confirmation of the required items. 《sheet: "input\_1"》

6-1 「4. Requester Item Number」, 「Requester information」

Please confirm the "Requester Item Number" and "Requester Information" provided by the EIZO personnel.

4. Requester Item Number(100 items max. If exceeding 100 items, make additional files.)			
Requester Item Number	Issuing Company Item Number	Requester Item Number	Issuing Company Item Number
1	0123456789	51	
2	ABC	52	
3		53	
4		54	
5		55	
6		56	
7		57	
8		58	
9		59	
10		60	
11		61	
12		62	
13		63	
14		64	
15		65	
16		66	
17		67	
18		68	
19		69	
20		70	
21		71	
22		72	
23		73	
24		74	
25		75	
26		76	
27		77	
28		78	
29		79	
30		80	
31		81	
32		82	
33		83	
34		84	
35		85	
36		86	
37		87	
38		88	
39		89	
40		90	
41		91	
42		92	
43		93	
44		94	
45		95	
46		96	
47		97	
48		98	
49		99	
50		100	

Note

Requester Information	
Company Name	
Requester Department	
Contact Person at Requester Department	
Address of Contact Person	153 Shimokashiwano, Hakusan, Ishikawa 924-8566 Japan
Telephone Number of Contact Person	
FAX Number of Contact Person	
Email Address of Contact Person	
Submission Date	

**Caution**

Up to 100 items can be submitted as a single data file when multiple components are covered by a single EIZO delivery specification, for example, in the case of series components.

Note) If your responses differ among the items indicated in the request from the EIZO personnel, please create other MIS files to provide information for items.

[7] MIS File: Data input 《sheet: "input\_1"》

7-1 1. Information for "MIS Information"

Provide the date of data input. (yyyy/mm/dd)

1. MIS Information	
Format Version	Ver. 1.3
Sheet Reference Number	
Date Originally Issued	
Date of Latest Revision	
Revision History	1
Identification Number	

- Sheet Reference Number : Not required to provide.
- Date Originally Issued : Provide the date if this is an original issue.
- Date of Latest Revision : Provide the date if this is a revised issue.
- Revision History : Change the revision history if MIS information has been revised.  
Example) 2,3 ...999
- Identification Number : Not required to provide.



## 7-2 2. Issuing company Information

Provide the supplier information that directly delivers parts or materials to EIZO Corporation.

2. Issuing company Information	
Company Name (Alphanumeric)	②
Company Name (Mother Language)	
Company ID / ID Organizer	
Company ID / Entity ID	
Issuing Department	
Address	
Telephone No. of Issuing Department	
FAX No. of Issuing Department	
Email Address of Issuing Department	
Department in Charge of Preparing MIS	
Telephone No. of Department	
Remarks	

Registration ID of your registration agency : Please provide your registration ID, if you have registered for a registration agency, such as DUNS. (Optional)  
Corporate ID : Please provide your registration ID of a registration agency (Optional, if registered.)  
Remarks : Not required to provide.

## 7-3 3. Article Information

Please provide the manufacturer information.

3. Article Information	
Manufacturer Name	③
Common Product Name	
Issuing Company Item Number (Alphanumeric)	
Issuing Company Item Number (Mother Language)	
Multiple Product Name/Series Name	
Remarks	

### Tips & Hints

The contents and arrays of "1. MIS Information", "2. Issuing company Information" and "3. Article Information" are identical in AIS tool. You may divert the input data from AIS file by using copy and paste function.

Note: Only date format is different. Examples) MIS : 2016/07/01 AIS : 2016-07-01

## [8] MIS File: Data input «sheet:"input\_2"»

### 8-1 5.Compliance to Environmental Standards and Regulations

Select your response from pull-down menu for each criterion.

Please refer to Section 8-4 for target products, target Chemical Substances, and conformity condition

#### 8-1-1 EIZO Environmental Requirements

EIZO Environmental Requirements	<Targeted Items> : All delivering items <Conformity Conditions> : Refer to Section 6-1-2 of EIZO Green Procurement Standards (RC02-053)	⑤ Compliant Not compliant
	<Targeted Items> : All delivering items (except "batteries" and "packaging materials for EIZO's finished product")	

#### 8-1-2 Legal Prohibited Substances

Legal Prohibited Substances	<Targeted Items> : All delivering items <Conformity Conditions> : Refer to Section 5 of EIZO Green Procurement Standards (RC02-053)	⑤ Compliant Not compliant
EPEAT	<Targeted Items> : All delivering items	

#### 8-1-3 EPEAT (Cadmium, Hexavalent chromium)

EPEAT (Cadmium, Hexavalent chromium)	<Targeted Items> : All delivering items <Conformity Conditions> : Traces of Cadmium shall not exceed 50ppm in homogeneous materials. Traces of Hexavalent Chromium shall not exceed 500ppm in homogeneous materials. Both the criteria except the threshold amounts are identical to the RoHS requirement.	⑤ Ensured Measured to verify compliance Not ensured

#### 8-1-4 EPEAT (Lead)

EPEAT (Lead)	<Targeted Items> : All delivering items <Conformity Conditions> : Trace of Lead shall not contain lead greater than 50 ppm by weight per listed item. Note: The exemption of European RoHS directive is not applicable to this criterion.	⑤ Ensured Measured to verify compliance Not ensured
	<Targeted Items> : All delivering items	



## 8-1-5 REACH Regulation (SVHC)

<b>REACH Regulation (SVHC)</b>	<Targeted Items> : All delivering items <Targeted SVHC> : SVHC (169 substances listed by June 2016) <Judgment> : Content rate of SVHC per item by weight is classified in Not contained, less or equal to 1000ppm or greater than 1000ppm.	<div style="border: 2px solid red; padding: 5px;"> <div style="text-align: center; background-color: yellow; border-radius: 5px; width: 40px; margin: 0 auto;">⑤</div> <div style="border: 1px solid blue; padding: 2px; margin-top: 5px;">           Not contained            Contained up to 1000ppm            Contained above 1000ppm         </div> </div>
--------------------------------	--	---

## 8-1-6 Red phosphorus

<b>Red phosphorus</b>	<Targeted Items> : All delivering items (however, choose "Not applicable (No plastics)" for the item without plastic part) <Judgment> : Clarify the intentional inclusion or not of red phosphorus in plastics.	<div style="border: 2px solid red; padding: 5px;"> <div style="text-align: center; background-color: yellow; border-radius: 5px; width: 40px; margin: 0 auto;">⑤</div> <div style="border: 1px solid blue; padding: 2px; margin-top: 5px;">           Not Contained            Contained            Not applicable (No plastics)         </div> </div>
-----------------------	--	--

## 8-2 6.Information for plastic parts weighing 25g or more

### 8-2-1 Select your response from pull-down menu.

<b>6. Information for plastic parts weighing 25g or more</b> <Targeted Items> : 1) Structural plastic parts weighing 25g or more such as enclosures, chassis 2) Plastic parts weighing 25g or more in LCD module <Note> : Complete the required information according to an example below ; *1: In case that there is no flame retardant or plastic label code , write down a hyphen ( - ) in the column.		<div style="border: 2px solid red; padding: 5px;"> <div style="text-align: center; background-color: yellow; border-radius: 5px; width: 40px; margin: 0 auto;">⑥</div> <div style="border: 1px solid blue; padding: 2px; margin-top: 5px;">           Applicable            Not applicable         </div> </div>
---	--	--

### 8-2-2 If your delivering item is targeted (applicable), please provide detailed information for all of the following 9 items in English with half-width characters.

Plastic part name, Weight (g), Type of plastic, Plastic brand name, Plastic model name, Flame retardant/plasticizer type \*1, Flame retardant/plasticizer CAS# \*1, Plastic label code \*1

\*1 In case that there is no flame retardant contained or plastic label code indicated, write down a hyphen ( - ) in the column.

Plastic part name	Weight (g)	Type of plastic	Plastic brand name	Plastic model name	Flame retardant/plasticizer type *1	Flame retardant/plasticizer CAS# *1	GreenScreen Benchmark *1	Plastic label code *1
(記載例) Front Panel	350	PS	ABC Plastic Co. Ltd.	XY-123	Triphenyl phosphate	115-86-6	2	>PS FR(40)<
				⑦				

### Example (1) Plastic parts weighing 25g or more such as enclosures, chassis

Plastic part name	Weight (g)	Type of plastic	Plastic brand name	Plastic model name	Flame retardant / Plasticizer type *1	Flame retardant / Plasticizer CAS# *1	GreenScreen Benchmark *1	Plastic label code *1
Panel Rear	830	PC+ABS	AAA Plastic Co. Ltd.	MM****	Triphenyl phosphate	115-86-6	2	>PC+ABS FR(40)<

### Example (2) Plastic parts weighing 25g or more in LCD module

Plastic part name	Weight (g)	Type of plastic	Plastic brand name	Plastic model name	Flame retardant / Plasticizer type *1	Flame retardant / Plasticizer CAS# *1	GreenScreen Benchmark *1	Plastic label code *1
Light Guide	115	PMMA	BBB Plastic Co. Ltd.	VVHH5**	-	-	-	>PMMA<
Mold Frame	185	PS	CCC Co. Ltd.	PPSS	Triphenyl phosphate	115-86-6	2	>PS FR(40)<

### 8-2-3 If your item is not targeted (Not applicable), please leave the columns blank.

## 8-3 7.Information for LCD panel

### 8-3-1 Select your response from pull-down menu.

7. Information for mercury lamps in LCD module						
<Targeted Items> : LCD modules <Note> : Complete required information following the example below for mercury- containing backlights. Complete section 7-2 only for mercury-free LED backlights.						
						<div style="border: 1px solid black; padding: 2px;"> <div style="text-align: right; font-weight: bold;">8</div> <div>             Applicable(mercury-containing backlights)              Applicable(mercury free LED backlights)              Not applicable           </div> </div>

8-3-2 If you select “applicable, (mercury-containing backlight)”, please provide detailed information for “7-1. Information for mercury lamps” and “7-2. Information for LCD panel in English” with half-width characters.

Example) CCFL

7-1 Mercury lamp supplier, Lamp ID code, Average(mg/lamp), Maximum(mg/lamp), Minimum(mg/lamp), Lamp Length(mm), Number of lamps,

7-2 LCD identification code, Size (inch), Panel technology, LCD manufacturing company

7-1. Information for mercury lamps						
Mercury lamp supplier	Lamp ID code	Average mg/lamp	Maximum mg/lamp	Minimum mg/lamp	Length of lamp mm/lamp	Number of lamps
(Example) ABC Light Co. Ltd.	XYZ-123456	3.0	4.0	2.0	600.0	4

7-2. Information for LCD panel			
LCD identification code	Size (inch)	Panel technology	LCD manufacturing company
(Example) LCD17ABC	17.0	IPS	LCD Unit Corporation

8-3-3 If you select “Not applicable, (mercury-containing backlight)”, please provide “7-2. Information for LCD panel” in English with half-width characters (Same as 8-3-2).

Example ) LED backlights

If your item is not targeted for “7-1. information for mercury lamps” (Not applicable), please leave the column blank.

7-2. Information for LCD panel			
LCD identification code	Size (inch)	Panel technology	LCD manufacturing company
(Example) LCD17ABC	17.0	IPS	LCD Unit Corporation

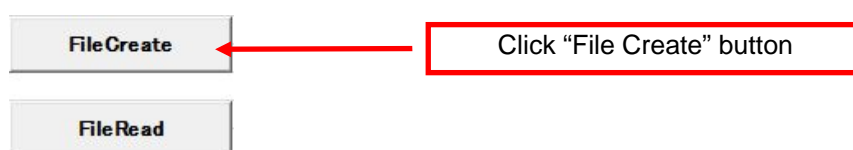
8-3-4 If your item is not targeted (Not applicable), please leave the column blank.

8-4 EIZO MIS file survey items

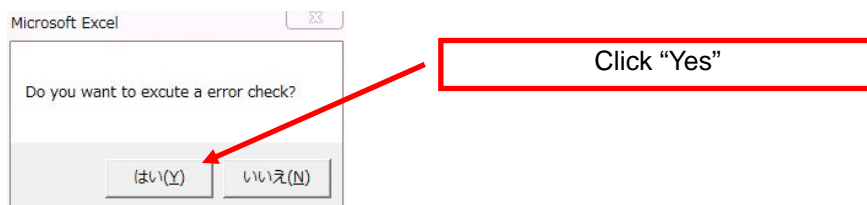
EIZO Environmental Requirements (Refer to Section 6-1-2 below-mentioned)	<Targeted Items>	: All delivering items	- Compliant - Not compliant
	<Conformity Conditions>	: Refer to Section 6-1-2 of EIZO Green Procurement Standards (RC02-053)	
Legal Prohibited Substances	<Targeted Items>	: All delivering items	- Compliant - Not compliant
	<Conformity Conditions>	: Refer to Section 5 of EIZO Green Procurement Standards (RC02-053)	
EPEAT (Cadmium, Hexavalent chromium)	<Targeted Items>	: All delivering items	- Ensured - Measured to verify compliance - Not ensured
	<Conformity Conditions>	: Traces of Cadmium shall not exceed 50ppm in homogeneous materials. Traces of Hexavalent Chromium shall not exceed 500ppm in homogeneous materials. Both the criteria except the threshold amounts are identical to the RoHS requirement.	
EPEAT (Lead)	<Targeted Items>	: All delivering items	- Ensured - Measured to verify compliance - Not ensured
	<Conformity Conditions>	: Trace of Lead shall not contain lead greater than 50 ppm by weight per listed item. Note: The exemption of European RoHS directive is not applicable to this criterion.	
REACH Regulation (SVHC)	<Targeted Items>	: All delivering items	- Not contained - Contained up to 1000ppm - Contained above 1000ppm
	<Targeted SVHC>	: SVHC (169 substances listed by June 2016) Refer to the table below for more detail. <a href="http://echa.europa.eu/web/guest/candidate-list-table">http://echa.europa.eu/web/guest/candidate-list-table</a>	
	<Judgment>	: Content rate of SVHC per item by weight is classified in Not contained, <1000ppm or >1000ppm.	
Red phosphorus	<Targeted Items>	: All delivering items (however, choose "Not applicable (No plastics)" for the item without plastic part)	- Not contained - Contained - Not applicable (No plastics)
	<Judgment>	: Clarify the intentional inclusion or not of red phosphorus in plastics.	
Information for plastic parts weighing 25g or more	<Targeted Items> :	1) Structural plastic parts weighing 25g or more such as enclosures, chassis 2) Plastic parts weighing 25g or more in LCD module	- Applicable - Not applicable
	<Report information>	Type of plastic, Plastic brand name, Plastic model name, Flame retardant/Plasticizer type and CAS#, Plastic label code	
Information for mercury lamps in LCD module	<Targeted Items>	: LCD modules	- Applicable (mercury-containing backlights) - Applicable (mercury free LED backlights) - Not applicable
	<Report information>	: ID code for mercury lamp, Mercury content value (max., average, and min.), Length of lamp, Number of lamps LCD identification code, Size(inch), Panel technology, LCD manufacturing company	

## [9] MIS File : Verification of your input data 《sheet:”input\_1”》

9-1 Click “File Create” button on “input\_1” of MIS File.

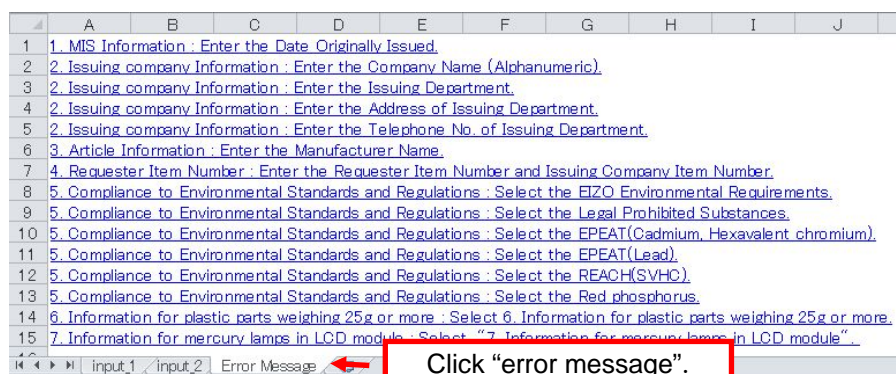
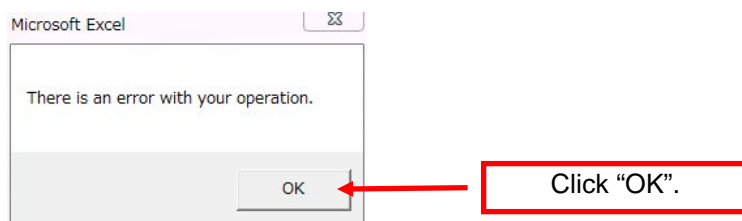


9-2 Perform error-checking.



9-3 Please create your input file if no errors are found.

9-4 If there are any errors, the dialogue box below will be popped up. Please modify your input data following messages. After finishing modifications, please try error-checking again.



### Hints and Tips

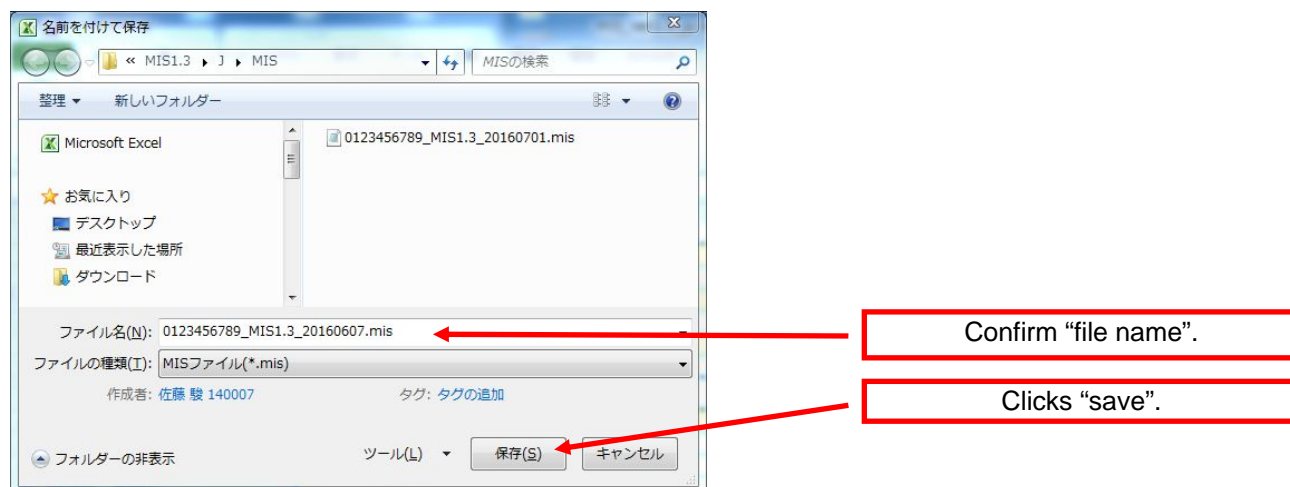
You can jump to the error you have by clicking error messages.

### Caution

Do not delete “error message” sheet during modifying errors. “Error message” sheet will be disappeared automatically when modification is completed.

## [10] Creates MIS File

The following dialog box will be appeared when there is no error found during error-checking (Section 9 “Verification of your input data”). Confirm the file name and save it in any folder.



### Hints & Tips

Save the file name as below;

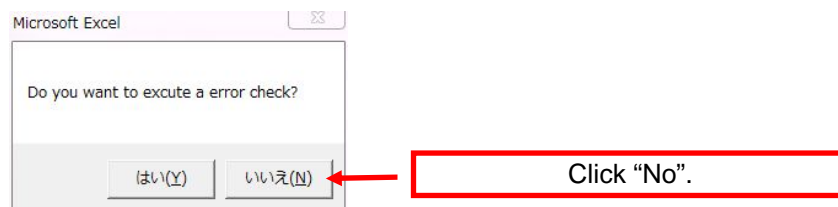
“10 digits of “Requester Item #1 (4. Requester Item Number)”\_MIS1.3\_ yyyymmdd.mis”

The file name is set automatically according to the above rule, and save it as is.

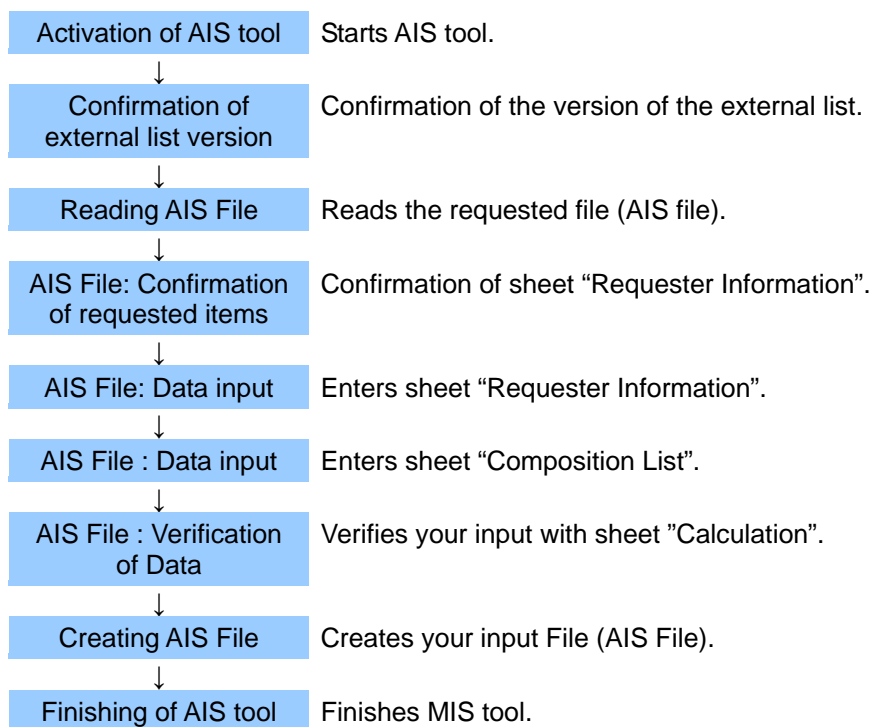
Example) “0123456789\_MIS1.3\_20160701.mis”

## [11] Finishes MIS tool

If you wish to save in the middle of data input, please move on to create the file (save temporally) without error-checking.



## [12] Flows of creating AIS File



### Hints & Tips

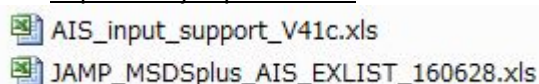
To create AIS file, please refer to JAMP article information sheet preparation manual and AIS input support tool from the official website of JAMP(URL: <http://www.jamp-info.com/ais>) and this entry manual.  
Note) Company name, personnel name, email address are required when downloading AIS tool.

\*1: Parts and products that are comprised of multiple original parts, chemical substances or preparations.

## [13] Activation of AIS tool

13-1 After downloading AIS tool and the External List from JAMP website, please save the tool in any folder such as desktop.

URL : <http://www.jamp-info.com/>



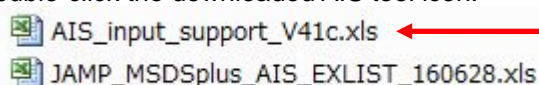
### Hints & Tips

The AIS Tool does not run without the Substance list, Material list, and other necessary list. These lists are separated from the tool itself in complied as an external list.  
Place the external list file available in the JAMP web site into the folder that includes the Input Support Tool.  
AIS tool is a rewritable tool. Downloading the file is not necessary for each survey.

### Caution

Please do not change the file name of the External List when placing it into the folder.

13-2 Double-click the downloaded AIS tool icon.



Double-Click the icon



## [14] Confirmation of External List

14-1 Confirm the version of the External List by "External List" on the sheet "Explanation" in AIS Tool.

### About External List

This tool is able to run with the external list file that contains Substance list, Material list, and necessary list of applicable laws such as exemptions. Executing this tool, the tool file and the external list file must be placed to the same folder.

The name of external list file is "JAMP\_MSDSplus\_AIS\_EXLIST\_YYYYMMDD.xls" Herein YYYYMMSS represents date of issuing. Versions of Substance list is shown below of this sheet.

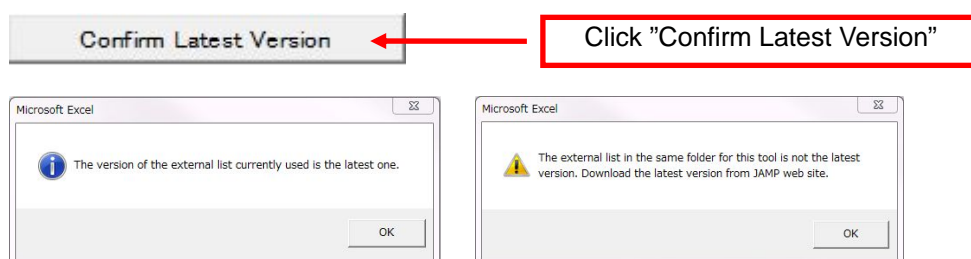
The external list file will be updated when Substance list is revised. Please use a latest external list.

Click [Confirm Latest Version] button to confirm its latest version. This function accesses latest version info. located on JAMP Web site and compare to that of on local folder. This function also works at the tool start-up.

For environment that cannot access internet, there is option to be disable internet access at start-up in Functional Option sheet.

External List	Material List	2.01
	Substance List	4.060
Confirm Latest Version		

14-2 Alternatively, click "Confirm Latest Version" to confirm it.



### Hints & Tips

Always use the latest version of the External List.

## [15] Reading the AIS File

15-1 Click "Edit AIS" or "Integrate AIS" in the tool.

Input support tool of JAMP AIS version 4.1c	
This tool provides functions such as filling, editing, viewing, and integrating to support you AIS operation.	
[Edit AIS] mode provides functions to create original AIS and edit AIS already exist.	
[Integrate AIS] mode provides function to integrate an AIS from multiple AIS.	
Click [Edit AIS] button to enter AIS Edit mode, or click [Integrate AIS] button to enter Integrate AIS mode.	
For detail of each item, please see Tool operation manual and AIS manual.	
Edit AIS	Integrate AIS

Click "Edit AIS" or "Integrate AIS" in the tool

### Caution

If the targeted item is composed of a complex article, please select "Integrate AIS".

\*1: A part or product manufactured by combining and processing multiple original parts and/or substances or mixtures/preparations.

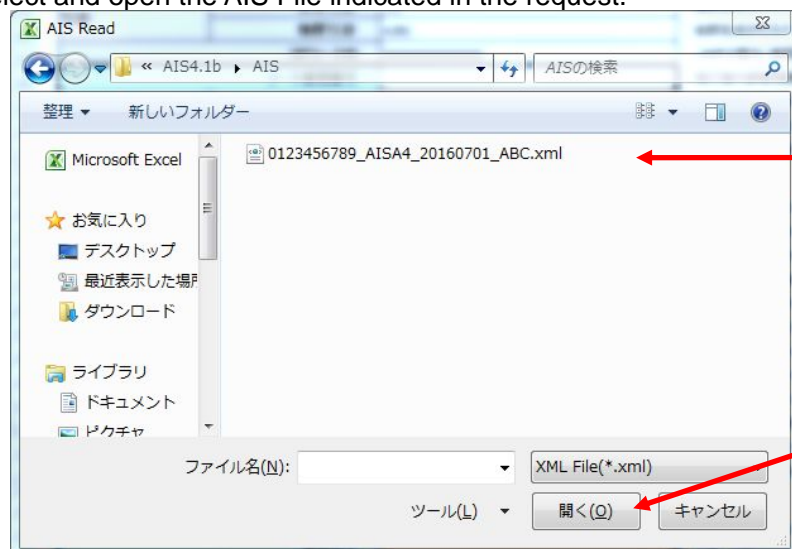
15-2 Save the AIS File indicated in the request from the EIZO personnel in any folder such as desktop.

15-3 Open the sheet "General Information" and click "Import XML".





#### 15-4 Select and open the AIS File indicated in the request.



#### 15-5 File Reading completes.

#### 15-6 Images after reading AIS File

After reading AIS File, the following image will be displayed. Please provide necessary information.

#### General Information

Import XML  
Clear General Information

Please fill in the information within the bold lines.  
\* Marked Column: Required Field

1. AIS Information		
Format Version	Ver. 4.1	No need to fill in - automatically generated
List	Material List	No need to fill in - automatically generated
	Substance List	No need to fill in - automatically generated
GP(Global Portal) Sheet ID	9999999999999999	Inputting into this field is not necessary.
Sheet Reference Number		Sheet Reference Number Controlled by Issuing Company
Original	Issued Date *	Issuing Date of First Edition (2000-01-01 To 2029-12-31)
Revision	Latest Issued Date	If not revised, leave it blank (2000-01-01 To 2029-12-31)
	Revision History *	Fill in revision number up to 3 digit. (Ex. 1, 2, ..., 999)
2. Issuing company Information		
Company Name	Alphanumeric *	Maximum number of letters is 200.
Mother Language		Maximum number of letters is 200.
Company ID	ID Organizer	Enter the Organizer ID. Ex. DUNS:0060, CII:0147
	Entity ID	Entity ID registered in the Organizer indicated above
Issuing Department	Department Name *	Maximum number of letters is 200.
	Address *	Maximum number of letters is 200.
	Telephone Number *	Maximum number of letters is 100.
	FAX Number	Maximum number of letters is 100.
	Email Address	Maximum number of letters is 100.
Department in Charge of Preparing AIS	Department Name	Fill in when preparing dept. is other than issuing dept. Maximum number of letters is 200.
	Telephone Number	Maximum number of letters is 100.
	Remarks	Maximum number of letters is 200.
3. Article Information		
Manufacturer Name *		Maximum number of letters is 200. Ex: yyy Electronic Mfg. Co., Limited
Common Product Name *		Maximum number of letters is 200. Ex: Ceramic Capacitor
Issuing Company Item Number	Alphanumeric *	Maximum number of letters is 200.
	Mother Language	Maximum number of letters is 200.
Multiple Product Name/Product Series Name		You can use this field for multiple items if the material composition information is common for all of them. Maximum number of letters is 200.
	Remarks	Please fill in if you want to provide this information in addition to Issuing Department. Maximum number of letters is 1024.
4. Composition Information		
Article	Unit type *	Select from options.
	Mass *	Input between 0.0001 and 99999.9999.
	Unit of Mass *	Select from options.
Declaration Concerning Composition Information		Select from options.
Total Amounts of Material	Calculation	Total material mass calculated from composition list
	GADSL	The ratio of the amount of materials mass for the article mass.
	JIG	Only "covered" is valid in Ver.4
		Only "covered" is valid in Ver.4
5. Other Information		
Reference Documents, Restrictions, Notes		Maximum number of letters is 200.

Explanation / General Information / Composition List / Calculation / Requester Information / Functional Option

Data input  
[1. AIS Information]  
[2. Issuing company Information]  
[3. Article Information]  
[4. Composition Information]

Composition Information

4. Composition Information

All Clear	Calculation			
Delete selected row	Update Substance Info	Error Check	Temporarily SAVE	Export XML

Level		Component		Material						
Add		Add		Select		Add				
Name	Quantity	Name *	Quantity *	Use *	Classification Number *	Name	Mass *	Unit *	Material Code of Public Standard	Remarks
					②'					

Substance					
Select		Add			
CAS Number	Substance Name	Concentration	Mass	Unit	Remarks
		②'			

Concerned Regulation or Other Documents Indicated by JAMP																			
SVHC		CLP Annex VI CMR 1.2		ESIS PBT		REACH Annex XVII		POPs Annex I		ELV		RoHS		GADSL		IEC62474/JIG		Voluntary Declarable Substances	
Applicable	Remarks	Applicable	Remarks	Applicable	Remarks	Applicable	Substance Use	Applicable	Substance Use	Applicable	Exempted Application	Applicable	Exempted Application	Applicable	Remarks	Applicable	Remarks	Applicable	Remarks

Data Input  
[4. Composition Information]

Calculation

Total Amounts of Material

Classification Number	Material Name	Mass(g)
-----------------------	---------------	---------

Total Amounts of Substance

CAS Number		Substance Name		Mass(g)		SVHC	REACH Annex XVII	RoHS
						Applicable	Substance Concentration within Article	Maximum Concentration within Material

Confirmation of total amount

Requester Information

Requester Information		Import Template
Company Name		Maximum number of letters is 200.
Company ID	ID Organizer	Enter the Organizer ID (DUNS, etc.)
	Entity ID	Entity ID registered in the Organizer indicated above
Requester Department	Department Name	Maximum number of letters is 200.
	Address	Maximum number of letters is 200.
Contact Person at Requester Department	Name	Maximum number of letters is 100.
	Telephone Number	Maximum number of letters is 100.
	FAX Number	Maximum number of letters is 100.
	Email Address	Maximum number of letters is 100.
Submission Date		Date that the AIS was provided (2000-01-01 To 2029-12-31)
Requester Item Number 1		Maximum number of letters is 200.
Issuing Company Item Number 1		Maximum number of letters is 200.
Requester Item Number 2		Maximum number of letters is 200.
Issuing Company Item Number 2		Maximum number of letters is 200.
Requester Item Number 3		Maximum number of letters is 200.
Issuing Company Item Number 3		Maximum number of letters is 200.
Requester Item Number 4		Maximum number of letters is 200.
Issuing Company Item Number 4		Maximum number of letters is 200.
Requester Item Number 5		Maximum number of letters is 200.
Issuing Company Item Number 5		Maximum number of letters is 200.
Requester Item Number 6		Maximum number of letters is 200.
Issuing Company Item Number 6		Maximum number of letters is 200.
Requester Remarks 1		Maximum number of letters is 80.
Requester Remarks 2		Maximum number of letters is 80.
Requester Remarks 3		Maximum number of letters is 80.

②'

Data input by EIZO  
[Requester Information]  
[Requester Item 1]  
[Issuing Company Item Number 1]

[16] AIS File : Confirmation of requested item 《Requester Information sheet》

16-1 Confirm your provided information for 「Requester Information (Optional)」, 「Requester Item Number 1」, 「Issuing Company Item Number 1」

Requester Information

Requester Information		Import Template
Company Name		
Company ID	ID Organizer	
	Entity ID	
Requester Department	Department Name	
	Address	
Contact Person at Requester Department	Name	
	Telephone Number	
	FAX Number	
	Email Address	
Submission Date		
Requester Item Number 1		0123456789
Issuing Company Item Number 1		ABC

Requester Item Number 1 : EIZO part number  
Issuing Company Item Number 1 : Supplier Item number

**[17] AIS file: Input of the required items 《General Information》**

17-1 Provide required information. (\* Marked columns are required to provide)

**1. AIS Information**

①'

Format Version		Ver.4.1
List	Material List	2.01
	Substance List	4.060
GP(Global Portal) Sheet ID		9999999999999999
Sheet Reference Number		
Original	Issued Date *	
Revision	Latest Issued Date	
	Revision History *	1

**2. Issuing company Information**

Import Template

Company Name	Alphanumeric *	
	Mother Language	
Company ID	ID Organizer	
	Entity ID	
Issuing Department	Department Name *	
	Address *	
	Telephone Number *	
	FAX Number	
	Email Address	
Department in Charge of Preparing AIS	Department Name	
	Telephone Number	
Remarks		

**3. Article Information**

Manufacturer Name *		
Common Product Name *		
Issuing Company Item Number	Alphanumeric *	
	Mother Language	
Multiple Product Name/Product Series Name		
Remarks		

**Tips & Hints**

The contents and arrays of "1. AIS Information", "2. Issuing company Information" and "3. Article Information" is identical in MIS tool. You may divert the input data from MIS File by using copy and paste function.

17-2 Unit type : Select 「1.piece」.

Mass : Fill in mass.

Unit of Mass ; Select「g」.(Change the unit to 「mg」 or 「kg」 when necessary)

Declaration Concerning Composition Information : Select either 「0」 or 「1」.

①'

**4. Composition Information**

Article	Unit type *	piece
	Mass *	
	Unit of Mass *	g
Declaration Concerning Composition Information *		1.This article is confirmed to contain declarable substances within the scope of Concerned Regulation or Other Documents Indicated by JAMP. <small>0.This article is confirmed NOT to contain any declarable substances within the scope of Concerned Regulation or Other Documents Indicated by JAMP.</small>
Total Amounts of Material		
GADSL		1.covers GADSL scope
JIG		1.covers JIG scope



[18] AIS file: Data input «Composition Information» (\* Marked columns are required to provide)

18-1 Component, Material : Provide required information.

②'

Component				Material				
Add				Select		Add		
Name	Quantity	Use	Classification Number	Name	Mass	Unit	Material Code of Public Standard	Remarks
*	*	*	*		*	*		

18-2 Substance : Provide required information.

②'

Substance					
Select		Click "Select"			
CAS Number	Substance Name	Concentration	Mass	Unit	Remarks

Select Substance

Filter Substance list

Filtering

RESET

EU01 EU04 OT01

EU02 EU05 IA01

EU03 EU06 IA02

Search by

Match Partial

Match Whole

NAME

CAS

EC No.

Sort by

NAME

CAS

Ver.4.010

CAS	EC No.	NAME
10022-31-8	233-020-5	Barium-nitrate
10022-49-7	600-038-9	Chromic acid (H2CrO7), dilithium salt, dihydrate
10022-68-1		Cadmium nitrate tetrahydrate, Cadmium nitrate
10023-59-2	309-359-0	Sodium [4-[[[6-[[4-amino-6-chloro-1,3,5-triazin-2-yl]amino]-1-hydroxy-3-sulpho-2-naphthyl]azo]-
10025-59-5		Dibutyl tin
10025-68-0	233-037-8	Diselenium dichloride
100258-44-4	309-388-9	Strychnidin-10-one, arsenite (1:1)
10026-03-6	233-053-5	Selenium tetrachloride
10026-17-2	233-061-9	Cobalt(II) fluoride
10026-18-3	233-062-4	Cobalt fluoride (CoF3)
10026-22-9	600-049-3	Cobalt nitrate
10026-29-0	233-064-5	Cobalt(2+) selenite
10026-24-1	600-050-9	Cobalt sulfate heptahydrate
10028-18-9	233-071-3	Nickel fluoride (NiF2)
1002-88-6	213-694-7	Cobalt distearate

CAS 10022-31-8 EC No. 233-020-5

SELECT CANCEL

Name Barium-nitrate

Group Name Barium compounds (organic or water soluble), selected

EU01[2011/65/EU RoHS] EU04[REACH Annex XVII Except EU03] OT01[ESIS PBT Fulfilled]

EU02[2011/37/EU ELV] EU05[REACH SVHC in Candidate List] IA01[GADSL]

EU03[CLP Annex VI CMR 1,2] EU06[POPs] IA02[IEC62474/JIG]

Caution

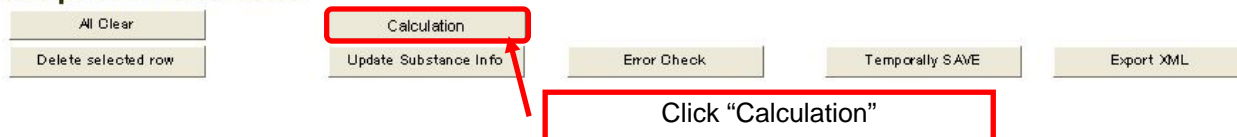
Select a cell where you want to enter substances and press the "Select" button in the Substance column. Voluntary Declarable Substances other than the substance list are not necessary to report. If entries of those substances are made, make sure to enter their names and CAS numbers in English with half-width characters.

18-3 Concerned Regulations: If the applicable flag "1" is automatically entered in the columns of "REACH Annex XVII", "POPs Annex I" and/or "ELV", "RoHS", select the appropriate applications in the columns of "Substance Use" and "Exempted Application" according to their pop-up application menus

Concerned Regulation or Other Documents Indicated by JAMP																			
SVHC		CLP Annex VI CMR 1.2		ESIS PBT		REACH Annex XVII		POPs Annex I		ELV		RoHS		GADSL		IEC62474/JIG		Voluntary Declarable Substances	
Applicable	Remarks	Applicable	Remarks	Applicable	Remarks	Applicable	Substance Use	Applicable	Substance Use	Applicable	Exempted Application	Applicable	Exempted Application	Applicable	Remarks	Applicable	Remarks	Applicable	Remarks

18-4 Calculation: Click “Calculation” when all required information is provided.

#### 4. Composition Information



#### Caution

Enter the information in English with half-width characters.

### [19] AIS file: Verification of data input, Creating file 《Calculation》

19-1 Click “Error Check” to check the input contents.

#### 4. Composition Information



19-2 Please create a XML file if no errors were found.  
Confirm the file name and save it in any folder.

#### 4. Composition Information



19-3 If there are any errors, please modify your input data and create a XML file.

## 19-4 File Name

When saving AIS file, give it filename according to the following methods from No. 1 to 4.  
No. 2 to 4 are assigned automatically.

### File naming methods

1	EIZO item number (10-digit alphanumeric) in "Requester Item Number 1" Add it in creating the file, because it is not assigned automatically.
2	"AISA4" for Original Part, and "AISB4" for Complex Article It is assigned to the filename automatically.
3	"20160701" for the entry date of July 1, 2016 It is assigned to the filename automatically.
4	Issuing company item number/alphanumeric It is assigned to the filename automatically.

- Examples) Original Part : " 0123456789\_AISA4\_20160701\_ABC.xml"  
Complex Article : " 0123456789\_AISB4\_20160701\_ABC.xml"

### Requester Information

Company Name	
Company ID	ID Organizer
	Entity ID
Requester Department	Department Name
	Address
Contact Person at Requester Department	Name
	Telephone Number
	FAX Number
	Email Address
Submission Date	
Requester Item Number 1	
Issuing Company Item Number 1	

EIZO item number (10-digit alphanumeric) in "Requester Item Number 1"

## [20] Finishes AIS Tool

20-1 Please close the AIS Tool

20-2 Please click "Temporarily SAVE", if you wish to temporarily save the entered information.

### 4. Composition Information

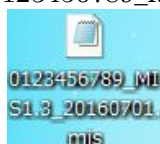
All Clear	Calculation				
Delete selected row	Update Substance Info	Error Check	Temporarily SAVE	Export XML	

Click "Temporarily SAVE"

## [21] Submission of File

Please send MIS and AIS files to EIZO personnel by e-mail.

• MIS File "0123456789\_MIS1.3\_20160701.mis"



• AIS File "0123456789\_AISA4\_20160701\_ABC.xml"

